

**ASPHALT PLANT CONTROL HOUSE**

FLOOR PLANS

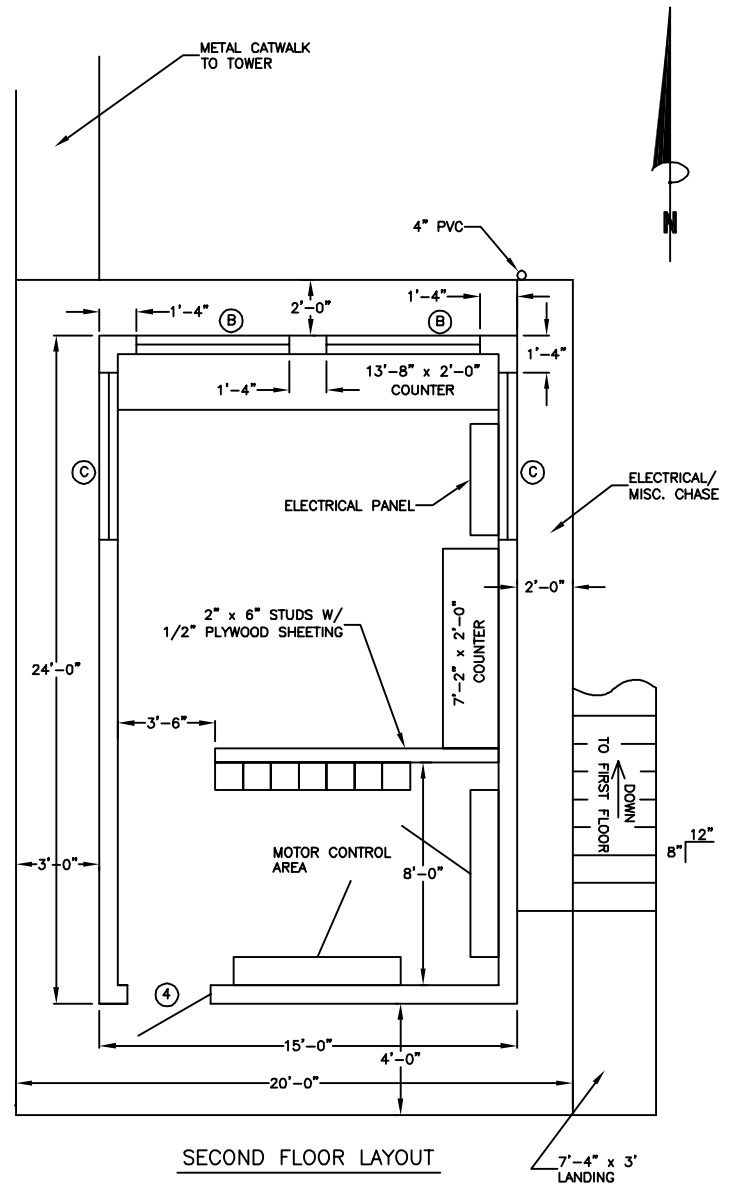
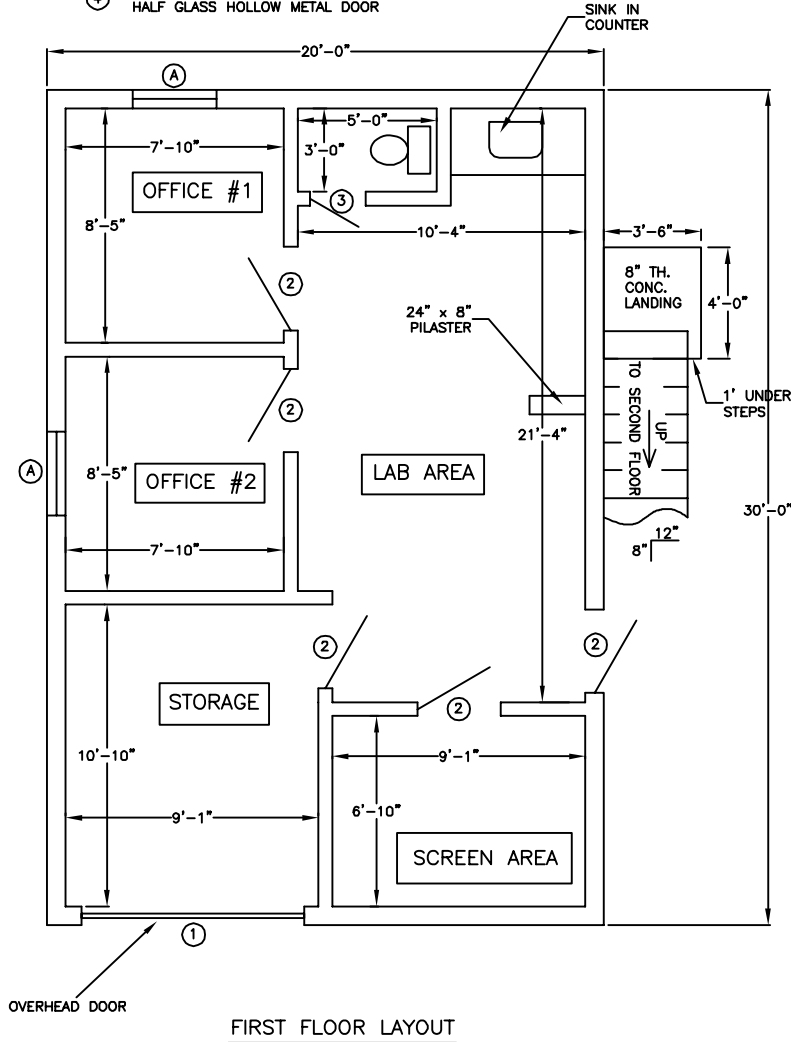
REVISED: 11/10/99

DOOR SCHEDULE

- ① 8' x 7' METAL OVERHEAD DOOR
- ② 3' x 6'-8" x 1-3/4" HOLLOW METAL DOOR
- ③ 2' x 6'-8" x 1-3/4" HOLLOW METAL DOOR
- ④ 3' x 6'-8" x 1-3/4" HALF GLASS HOLLOW METAL DOOR

WINDOW SCHEDULE

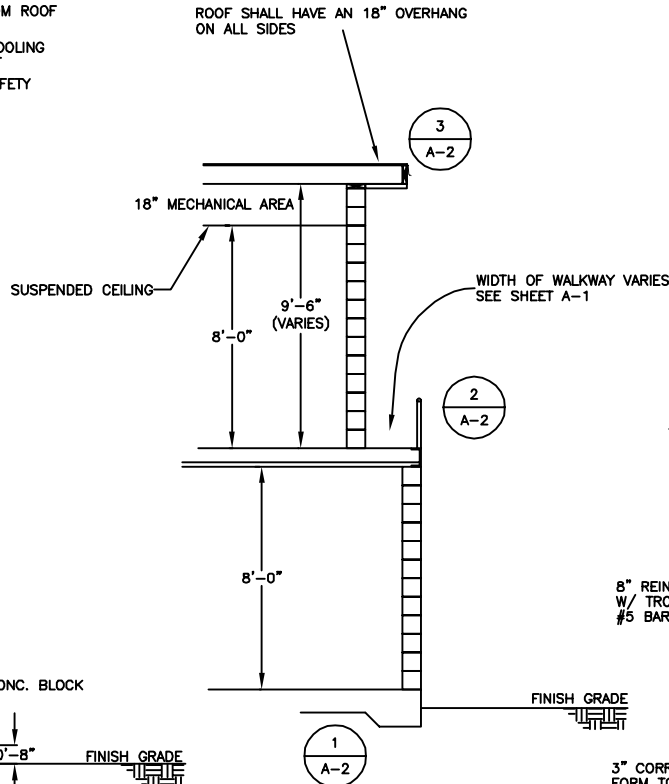
- (A) 36" x 32" FIXED TINTED THERMOPANE GLASS
- (B) 36" x 66" FIXED TINTED THERMOPANE GLASS
- (C) 36" x 72" FIXED TINTED THERMOPANE GLASS



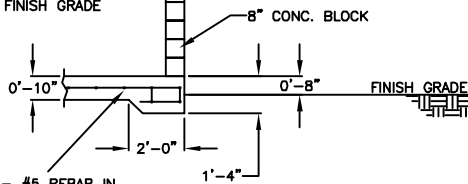
- \* ALL EXTERIOR WALLS = 8" CMU
- \* ALL INTERIOR WALLS = 6" CMU

**NOTES:**

1. BLOCKS SHALL BE FILLED WITH ZONOLITE INSULATION OR EQUAL
2. INSTALL METAL FACIA WITH DRIP EDGE AT ROOF
3. FLOOR DECK SHALL HAVE A VERY SMOOTH STEEL TROWEL FINISH
4. SAFETY HANDRAIL TO BE INSTALLED ALONG PERIMETER OF 2ND FLOOR - WELDED TO 8" CHANNEL
5. INSTALL LIGHT POLE OR BEAM (APPROX. 5') FROM ROOF DECK FOR LIGHTS
6. INSTALL HVAC UNIT(S) ON ROOF; CAPABLE OF COOLING ENTIRE BUILDING WITH ELECTRICAL HEAT ELEMENT
7. ALL WINDOWS TO BE OF TINTED THERMOPANE SAFETY GLASS DESIGN

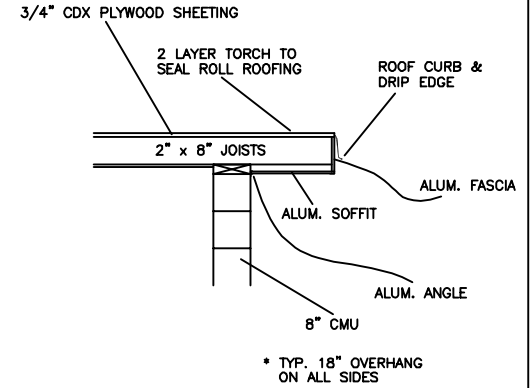


\* FINISH FLOOR SHALL BE 8" ABOVE FINISH GRADE

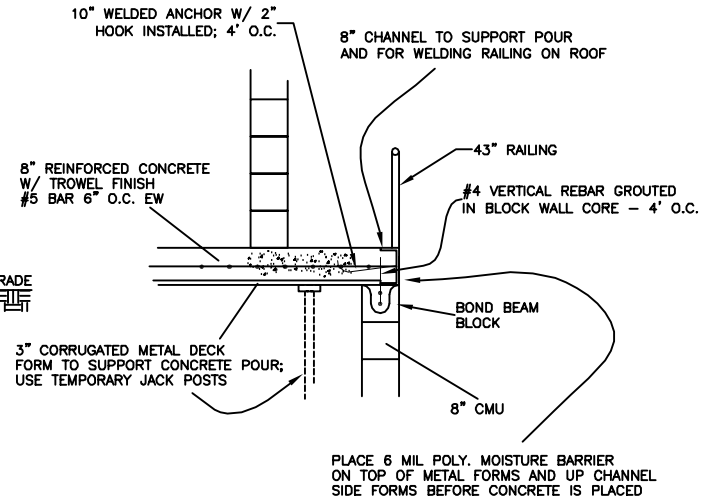


CLASS A CONC. - #5 REBAR IN FOOTER AND 6 x 6 x 6/6 WWM IN SLAB

1  
A-2  
FOOTER DETAIL



3  
A-2  
ROOF DETAIL



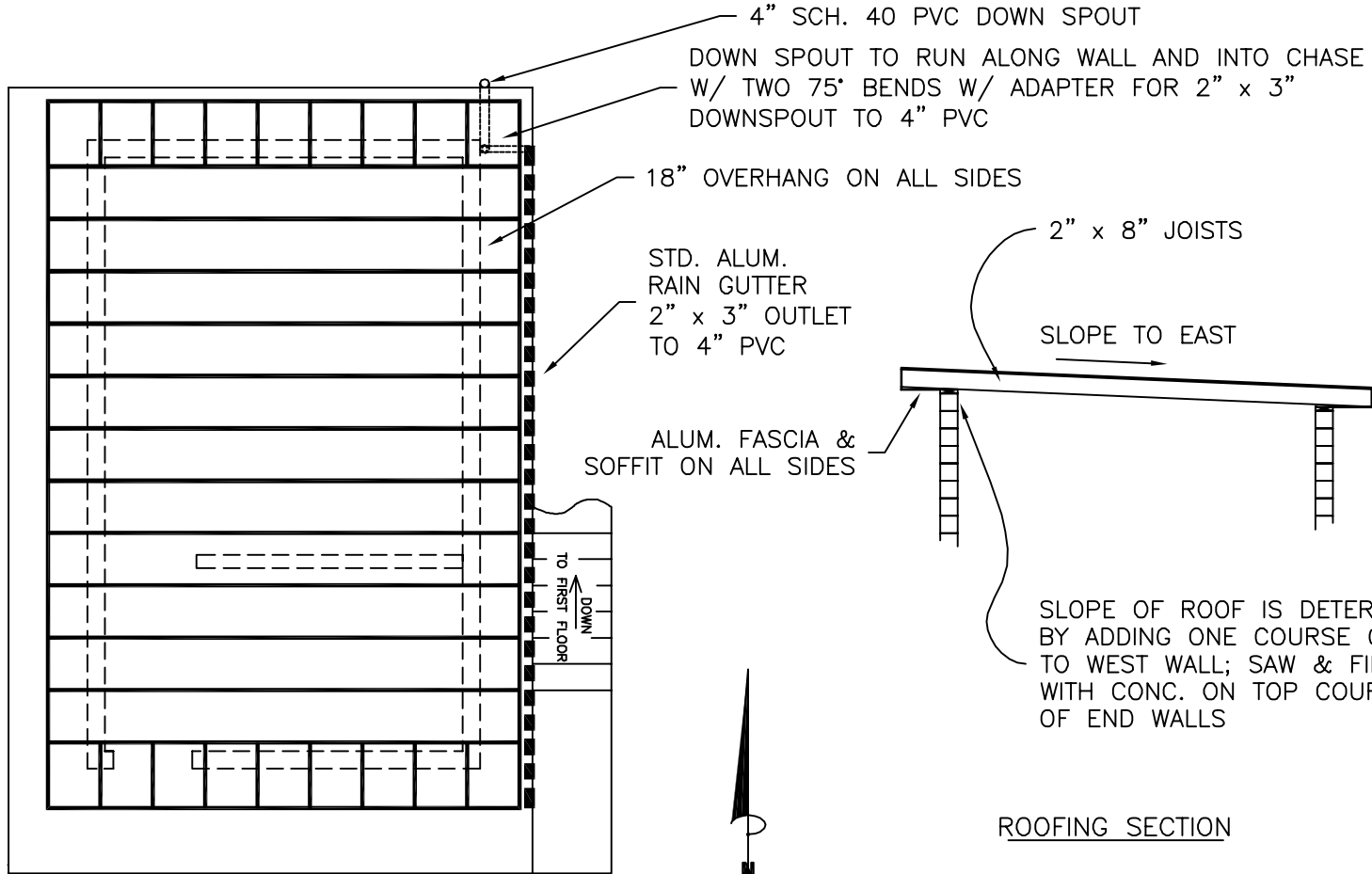
2  
A-2  
2ND FLOOR SECTION

ASPHALT PLANT CONTROL HOUSE

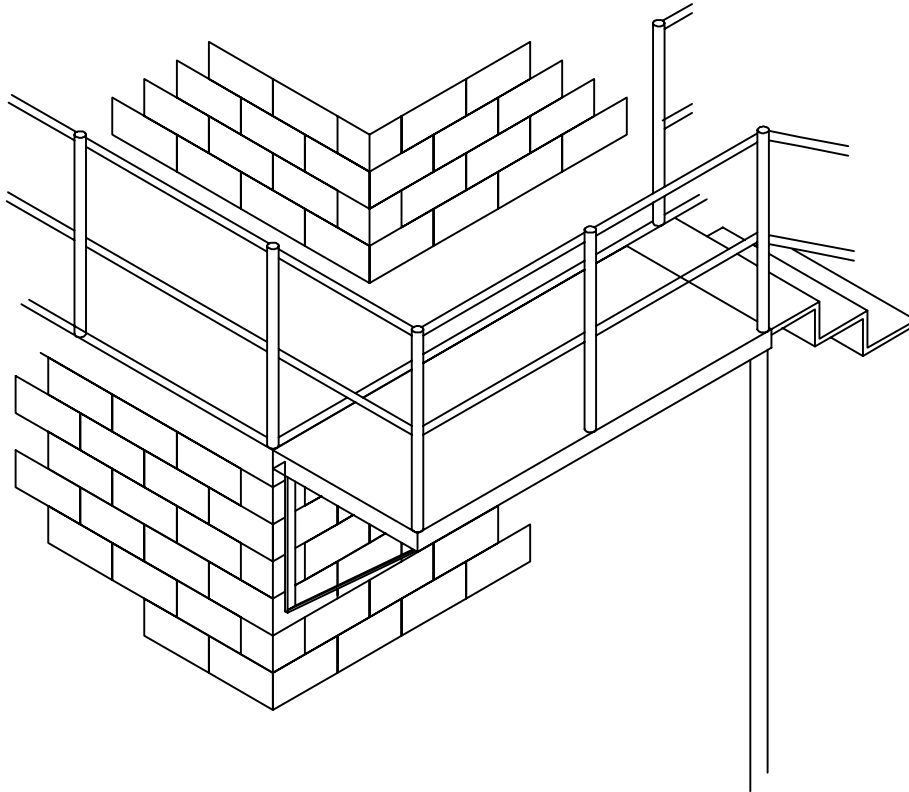
ROOFING PLAN

REVISED: 11/5/99

\* ALL JOISTS TO BE 2" x 8" - 24" O.C.  
W/ 3/4" PLYWOOD OR FLAKEBOARD ROOF SHEETING



ROOFING PLAN



1. CONSTRUCT 7'-4" x 3' WIDE RECTANGULAR FRAME W/  
4" x 1/4" ANGLE; 4" STITCH WELDS
2. PLACE 1/8" FLAT STEEL ON INSIDE OF RECTANGULAR  
FRAME AND WELD TO ALL SIDES
3. USE 1/8" ALUM. SHEET FOR FORM (SALVAGED HWY SIGNS)
4. INSTALL WOVEN WIRE MESH - 6x6x10 10ga.
5. FINISH FLUSH W/ 2ND FLOOR BLDG DECK
6. HANDRAIL TO BEGIN AT TOP OF STEPS AND BE INSTALLED  
AROUND THE PERIMETER OF 2ND FLOOR
7. INSTALL TWO POSTS (3" PIPES) - ONE FOR LANDING  
SUPPORT AND ONE FOR STAIRWAY SUPPORT
8. WELD A TRIANGLE FROM 2 1/2" ANGLE TO MAKE A SUPPORT  
BRACKET FOR STAIRWAY PLATFORM; MOUNT SUPPORT  
BRACKET 4" NORTH OF BLDG CORNER

\* 4" TOE BOARD IS NOT SHOWN

STAIRWAY PLATFORM ISOMETRIC